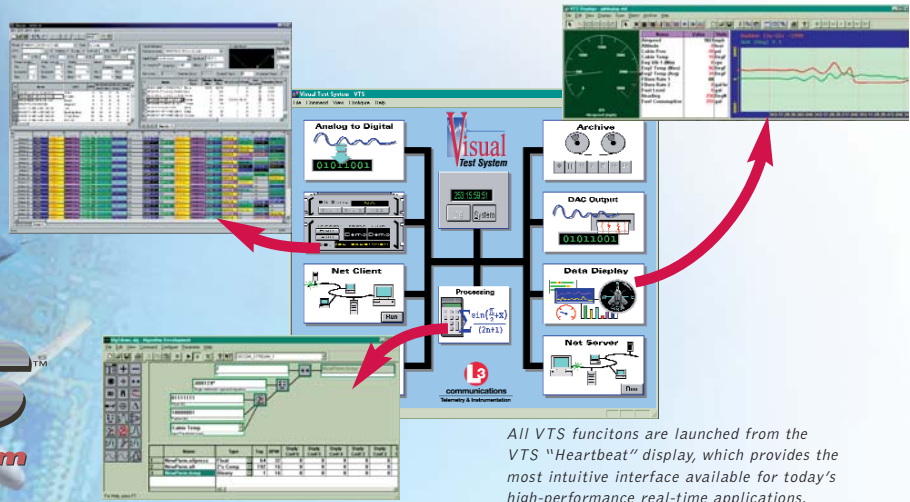


VTS EXPRESS



VTS
Visual Test System



All VTS functions are launched from the VTS "Heartbeat" display, which provides the most intuitive interface available for today's high-performance real-time applications.

Overview

L-3 introduces VTS Express, a single-user version of our industry leading Visual Test System (VTS) Software. VTS Express is a standalone native Windows application for performing real-time data acquisition, visualization, and single-stream archiving. VTS Express includes management and setup of the most popular VTS unique acquisition and distribution modules, including the Multifunction PCI Telemetry Module (MFT733A-PCI) and the Analog & Digital Ports Module (ADP716-PC), along with the VTS project databases. All tasks are accomplished through a standard Windows graphical user interface (GUI).

KEY FEATURES

- Easiest to use GUI on the market today, optimized for single-user, standalone applications
- Intuitive "Heartbeat" display shows all hardware and software modules and system status at a glance
- Based on the industry's most widely fielded PC real-time telemetry system
- Desktop, rack-mount, portable, and rugged configurations
- Use with single- and dual-stream versions of the Multifunction PCI Telemetry Module (MFT733A-PCI and MFT733A-PCI-S)
- Share project databases with other systems running full versions of VTS Software

"Heartbeat" Display

The Heartbeat display sits at the top of the VTS Express applications tree, showing each Express hardware and software module, as well as the module's status. The Heartbeat display offers a convenient launching point for the functions and applications described below. The display configures itself and is unique to your software and hardware configuration.

Module Setup

Module setup is mostly automatic. All VTS Express hardware modules utilize a Windows-compliant display for setup, control, and status, using fill-in-the-blank displays, pull-down menus, and radio buttons.

Telemetry Parameter Management and Simulation

Using the VTS Software, you can conveniently define telemetry parameters with a pair of interacting displays. The first display defines each parameter either in a fill-in-the-blank form and/or table format. Here, an entire row defines a single parameter with each column specifying properties such as name; format; bits per word; if the data is to be archived, displayed or distributed; bit masking; and arguments for real-time EU conversion. The second display defines the PCM simulation stream so that you can add common static values or invoke trigonometric functions yourself. You can also create PCM streams from archived or user-defined files.



Excellence You Can Measure

VTS EXPRESS SPECIFICATIONS

FrameView

FrameView renders a multicolor view of the entire telemetry frame in a spreadsheet-type format. Parameters appear in corresponding locations in the frame as they are defined. FrameView helps you set up your decommutator by isolating word locations and missing definitions, or, conversely, words used by multiple parameters.

Real-Time Displays

VTS Express data displays are optimized for performance and are totally configurable in real time without the need for a compilation step. You can select from a number of gather types — from all samples of a parameter to a CVT —limited only by your PC's performance.

You can build your own displays from a variety of data types and graphs (scopes strip charts, tables, and text). These displays, along with their properties, can be saved for later recall. Property Sheets associated with each window define properties such as size, color, update rates, units, limit bands (up to 3), and bitmap backgrounds. A simple double-click of the mouse brings up the Property Sheet for modification. You determine the number and size of the displays on the screen (hidden or stored), and you can quickly switch between them as test points or maneuvers change.

Seamless Real-Time Data Storage

Data archiving is optimized for performance to capture all instances of all parameters in realtime with out data loss. Now you can archive all or compressed instances of all or selected prime and processed parameters to disk. control of recording and playback is easily managed with a virtual "tape deck" window that displays storage statistics. System or IRIG time is embedded in each data block to permit direct file access to specific data for playback. For visual analysis or speed, archived data can be played back from 1/32nd to 8 times real time.

Analog & Digital Output

The VTS Express can be used to send telemetry data directly to the Visual Test System's Analog & Digital Ports module (ADP716-PC) with onboard 1st- to 6th-order EU conversions.

Database and Archived Data Exchange

The VTS Express allows you to import or export database and archived data files as ASCII text. You can therefore create or transfer databases from/to your own applications via text or an MS Access or Excel database. Similarly, you can import archived files into your own or third-party applications for analysis.

Features

DisplaysScope, Scrolling Text, Table, Strip Chart
 Software ModulesHeartbeat Page, Standalone Bit Sync, Decom API
 Real-Time ArchivingSingle Stream

Compatibility

Windows 2000, XP
 Multifunction PCI Telemetry Module, Dual Stream (MFT733A-PCI)
 Multifunction PCI Telemetry Module, Single Stream (MFT733A-PCI-S)
 Analog & Digital Ports Board (ADP7 16-PC), ISA Bus

Ordering Information

VTS-EXPVTS Express Software for Windows 2000 or XP, 1 User
 VTS-EXP-UPGVTS Express Upgrade to VTS Base, 1 User
 Requires existing VTS Express Software with valid license

Telemetry-West

9020 Balboa Avenue
 San Diego, CA 92123-3507
 858.694.7500 800.351.8483
 Fax: 858.279.0693
 www.L-3Com.com/TW

PRODUCT COMPARISON	VTS Express	VTS Standard
Hardware		
MFT	X	X
PCI Decom/Sim		X
PCI Bit Sync (PMC)		X
PCI Analog Input Board		X
Telemetry Receiver		X
ISA Time Code		X
ISA Analog and Digital Ports	X	X
ISA Decom/Simulator		X
PCI Digital IO		X
Displays		
Scope	X	X
Scrolling Text	X	X
Table	X	X
Bar Chart		X
Strip Chart	X	X
Dial		X
Range		X
Cross Plot		X
Ident		X
Legacy Display Support		X
Real Time Archiving		
Single Stream Archiving	X	X
Multiple Stream Archiving		X
Export to ASCII		X
Split File Recording		X
Archive File Viewer		X
Archive File SDK		X
Software Modules		
Heartbeat Page	X	X
Standalone Bit Sync	X	X
Decom API	X	X
Software Processing		X
Remote Access Server		Optional
Network Server		Optional
Network Client		Optional
Software Development Kit		Optional
Algorithm Development Kit		Optional
Serial (RS-232) Output Module		X
SimPlayback (MFT based)		X

